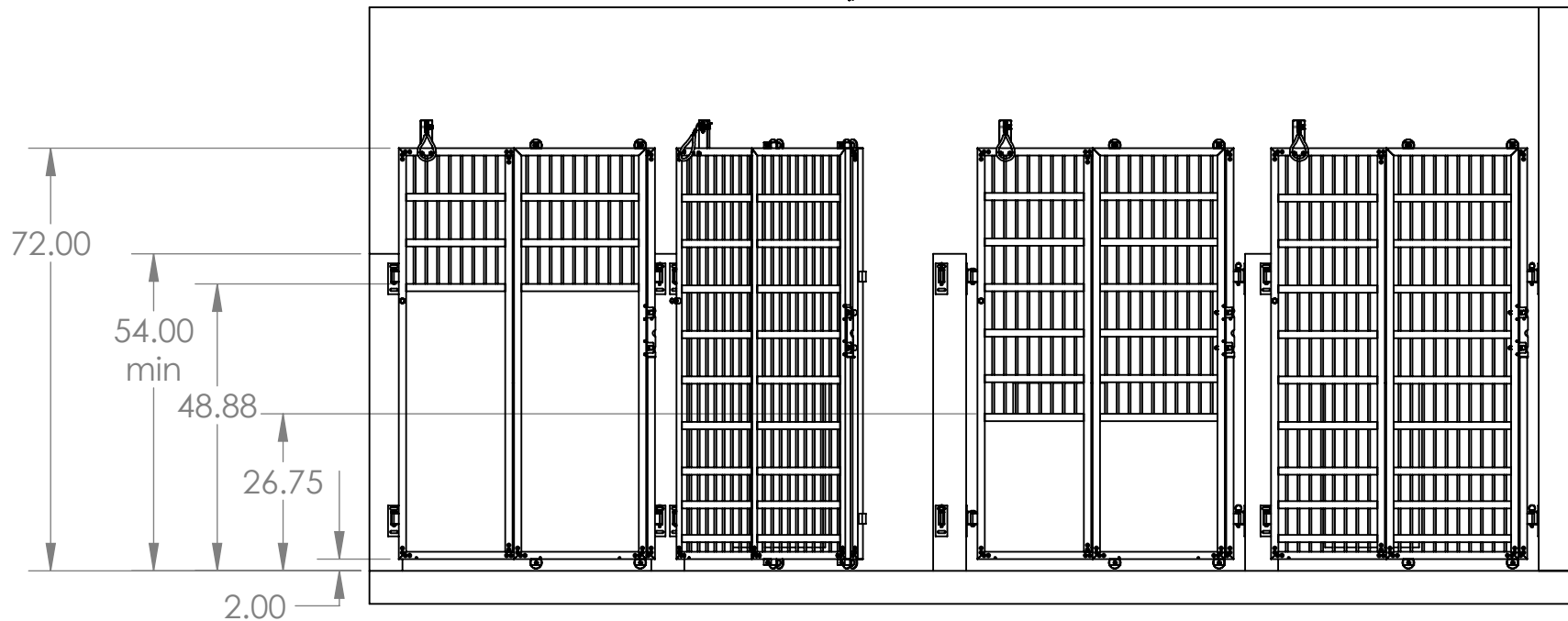
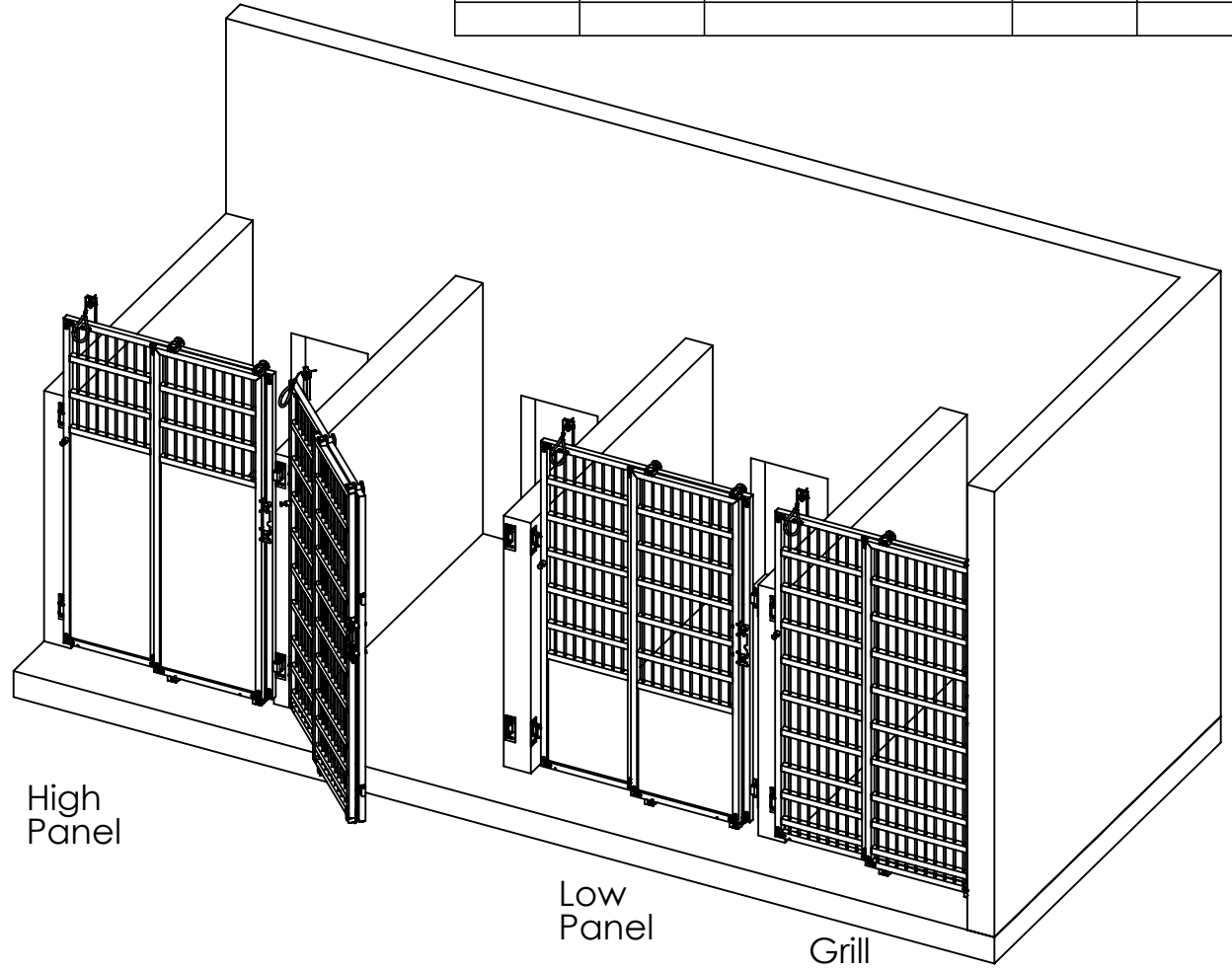
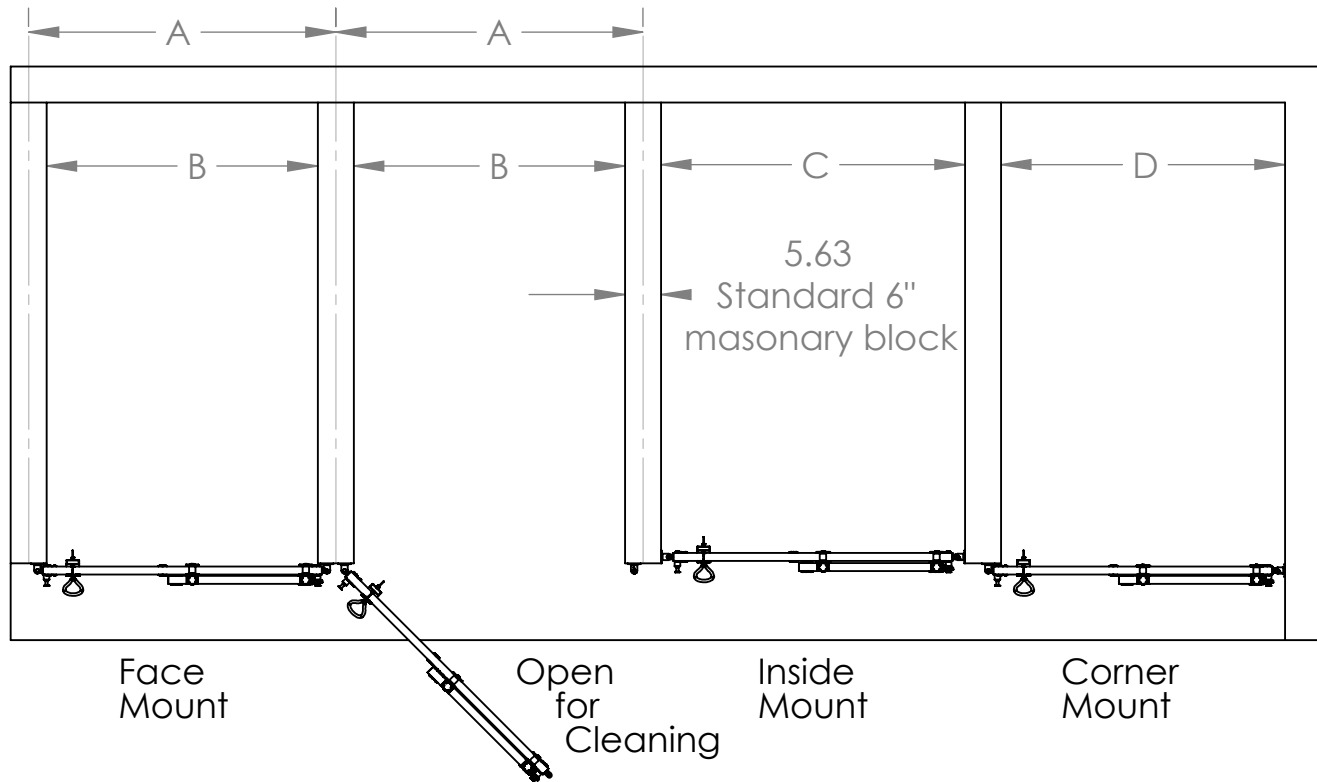


PN Grill	PN High Panel	PN Low Panel	Width (ft)	"A" (in)	"B" (in)	"C" (in)	"D" (in)
					+0.75 max	-0.00 min	+0.00 max
-00	-05	-10	4	48	42.38	47.50	45.38
-01	-06	-11	5	60	54.38	59.50	57.38
-02	-07	-12	6	72	66.38	61.50	69.38
-03	-08	-13	7	84	78.38	73.50	81.38
-04	-09	-14	8	96	90.38	85.50	93.38

REV	DATE	DESCRIPTION	DRW	APP



NOTE:

1. Gate Fronts hinge to open for cleaning.
2. Sliding doors open to manage dog entry and exit.
3. Sliding doors do not obstruct the aisle.
4. Lockable Stainless Steel double catch latch auto latches on close.
5. Ball bearing crowned rollers for zero effort gate opening and closing.
6. Heavy gage radiused aluminum tubing is anodized for a rugged long lasting finish.



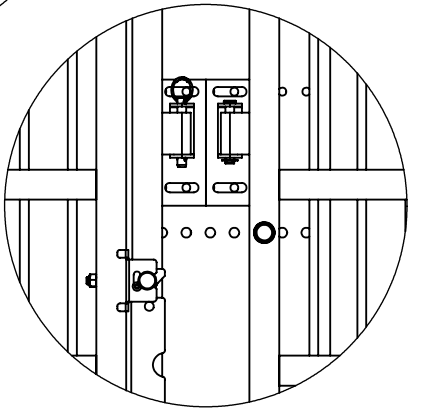
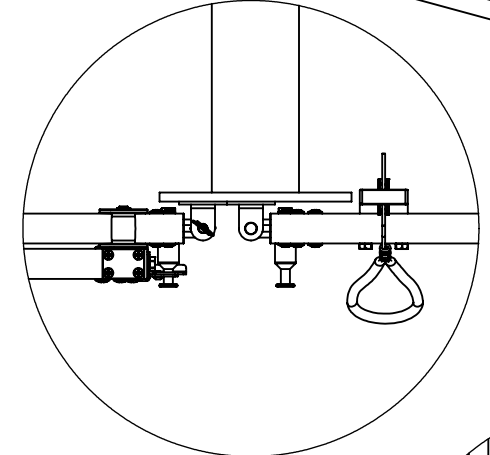
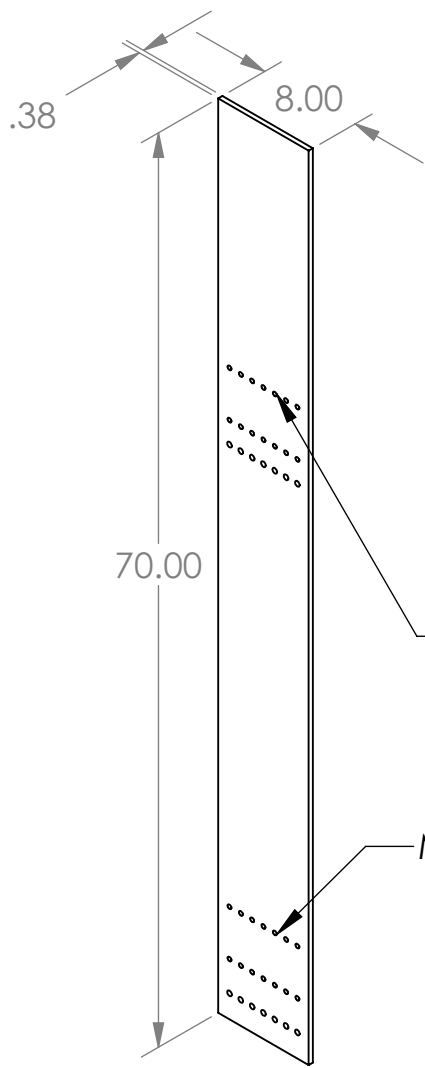
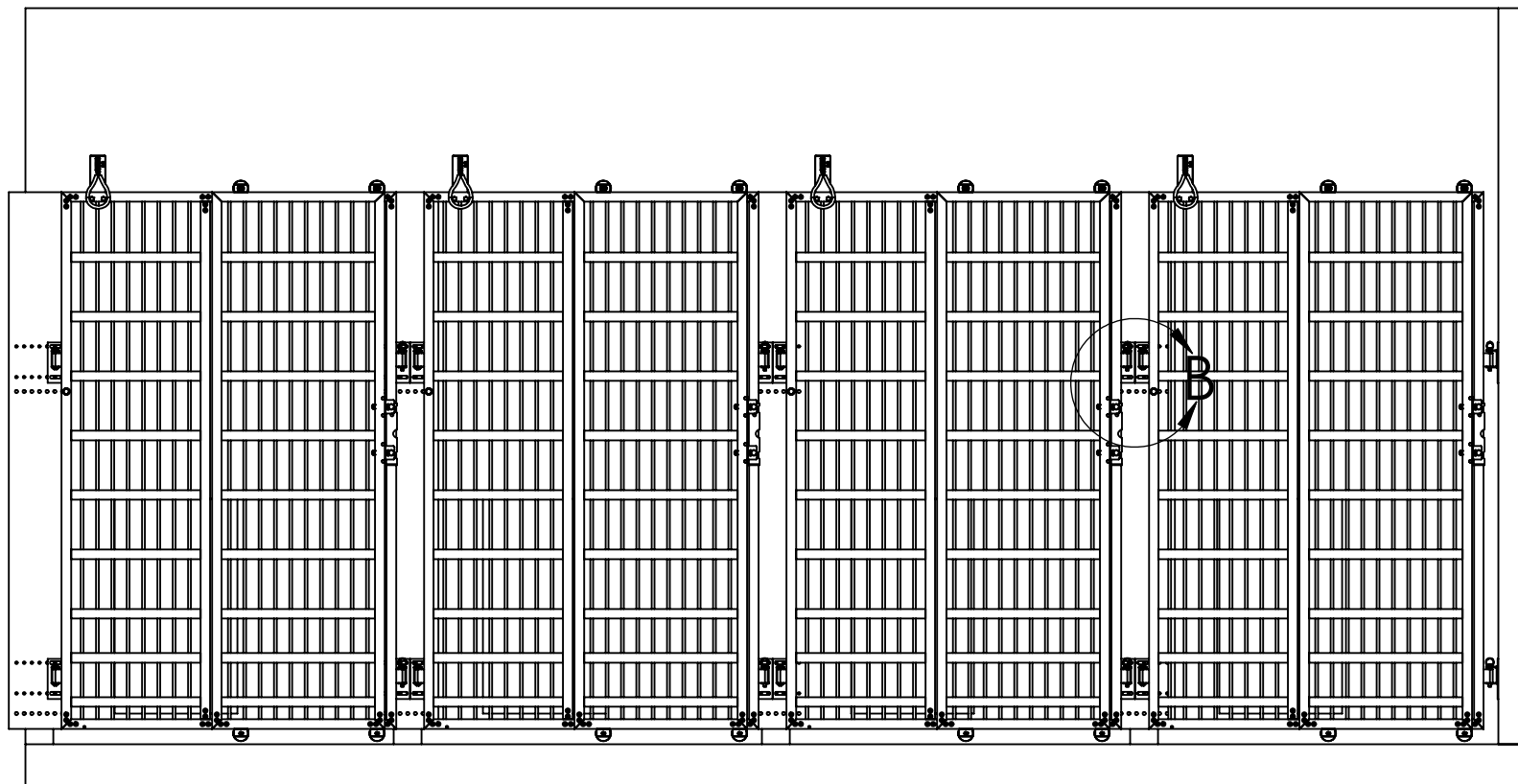
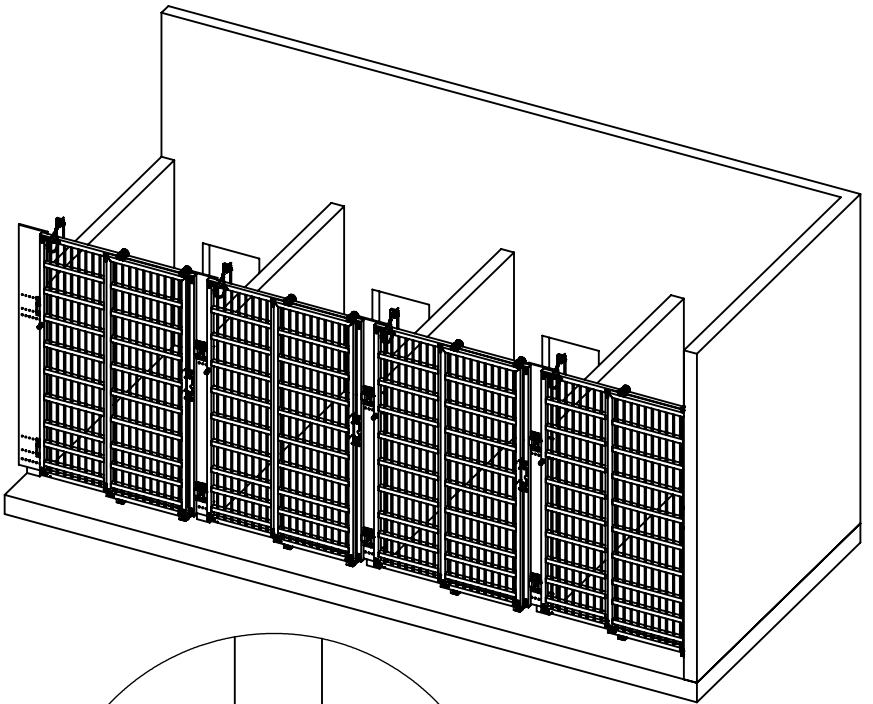
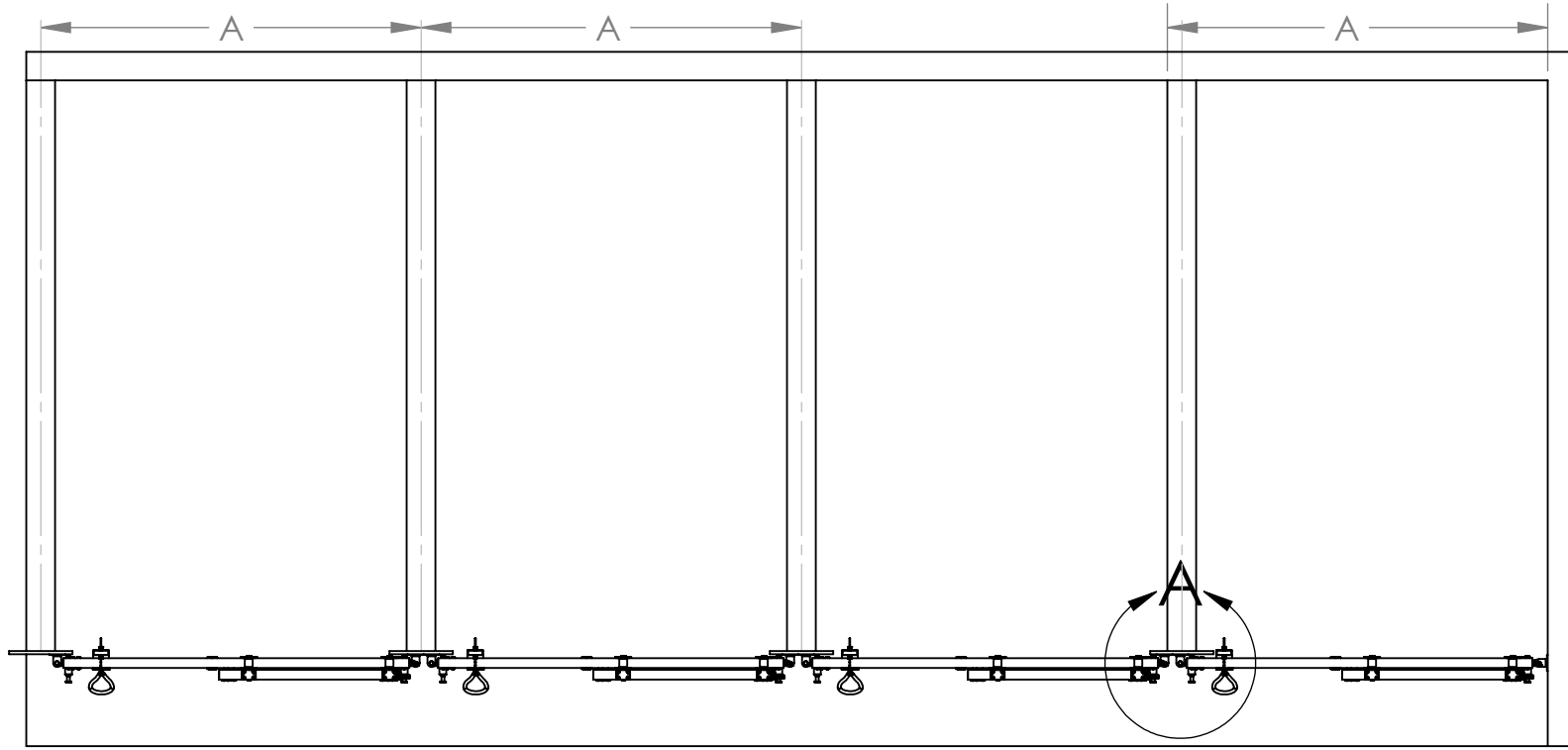
LARSON SYSTEMS INC.

10073 Baltimore St. NE PH. 763-780-2131
Mpls., MN 55449 FAX. 763-780-2182

APPROVALS	DATE
DRAWN DAL	04/14/2011
APP.	
APP.	

Sliding Kennel Gate w/ hinged attachment w/ walls		REV:
B	DWG. NO. 025-0000-0758-XXA	
SCALE: NONE	SHEET 1 OF 4	

REV	DATE	DESCRIPTION	DRW	APP



- Note:
1. This face plate system covers the end of the divider wall with an easily cleaned, attractive anodized cover.
 2. This makes a convenient and rugged mounting system for the gates
 3. This system can tolerate deviations of the individual divider walls from the nominal "A" dimension by as much as 2.0"
 4. Mounting holes in the divider wall can be centered rather than drilled near the edge, risking concrete breakout.
 5. Cumulative "A" dimension must equal the nominal "A" $-.75" +3.00"$.



LARSON SYSTEMS INC.

10073 Baltimore St. NE PH. 763-780-2131
Mpls., MN 55449 FAX. 763-780-2182

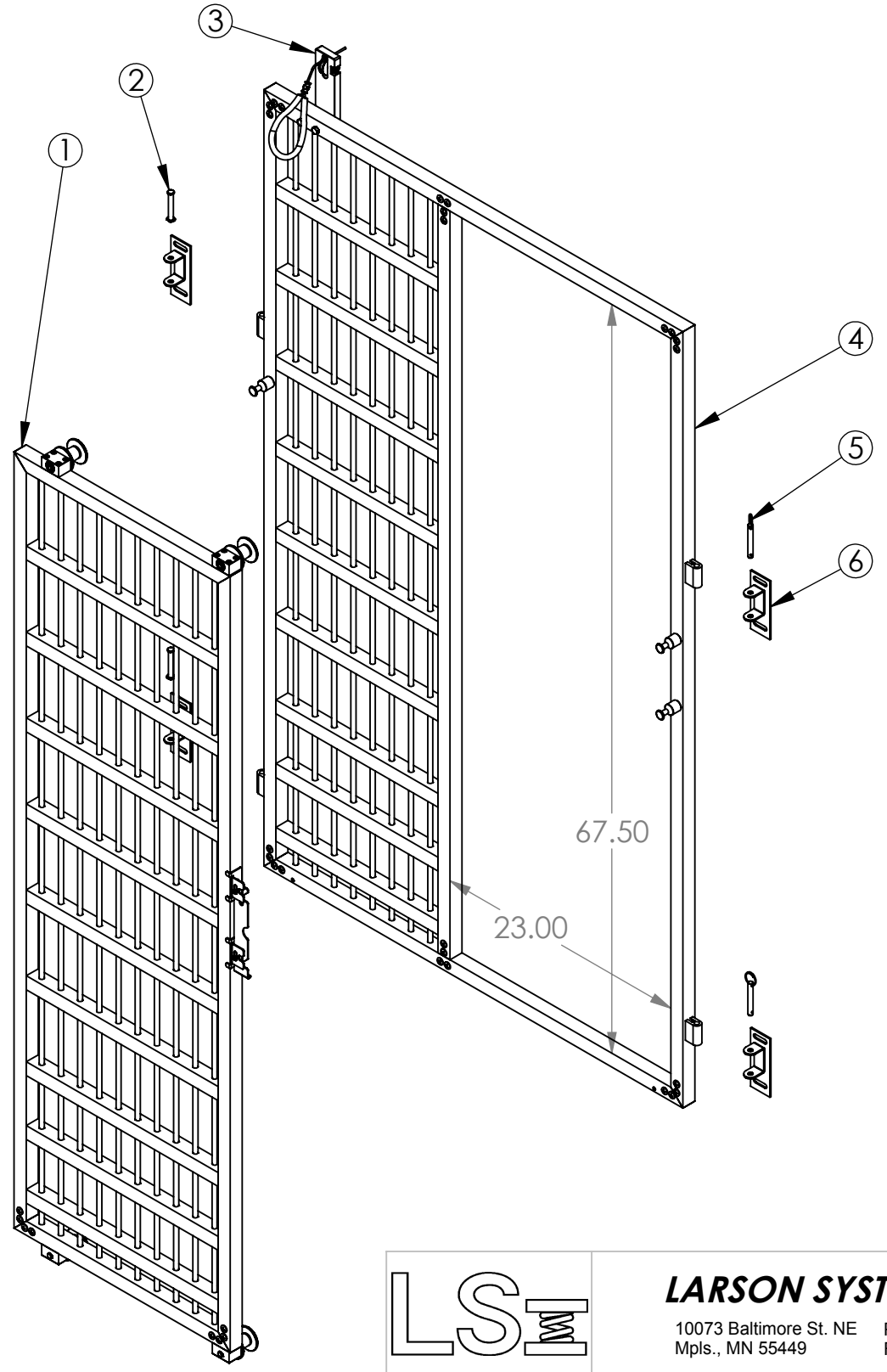
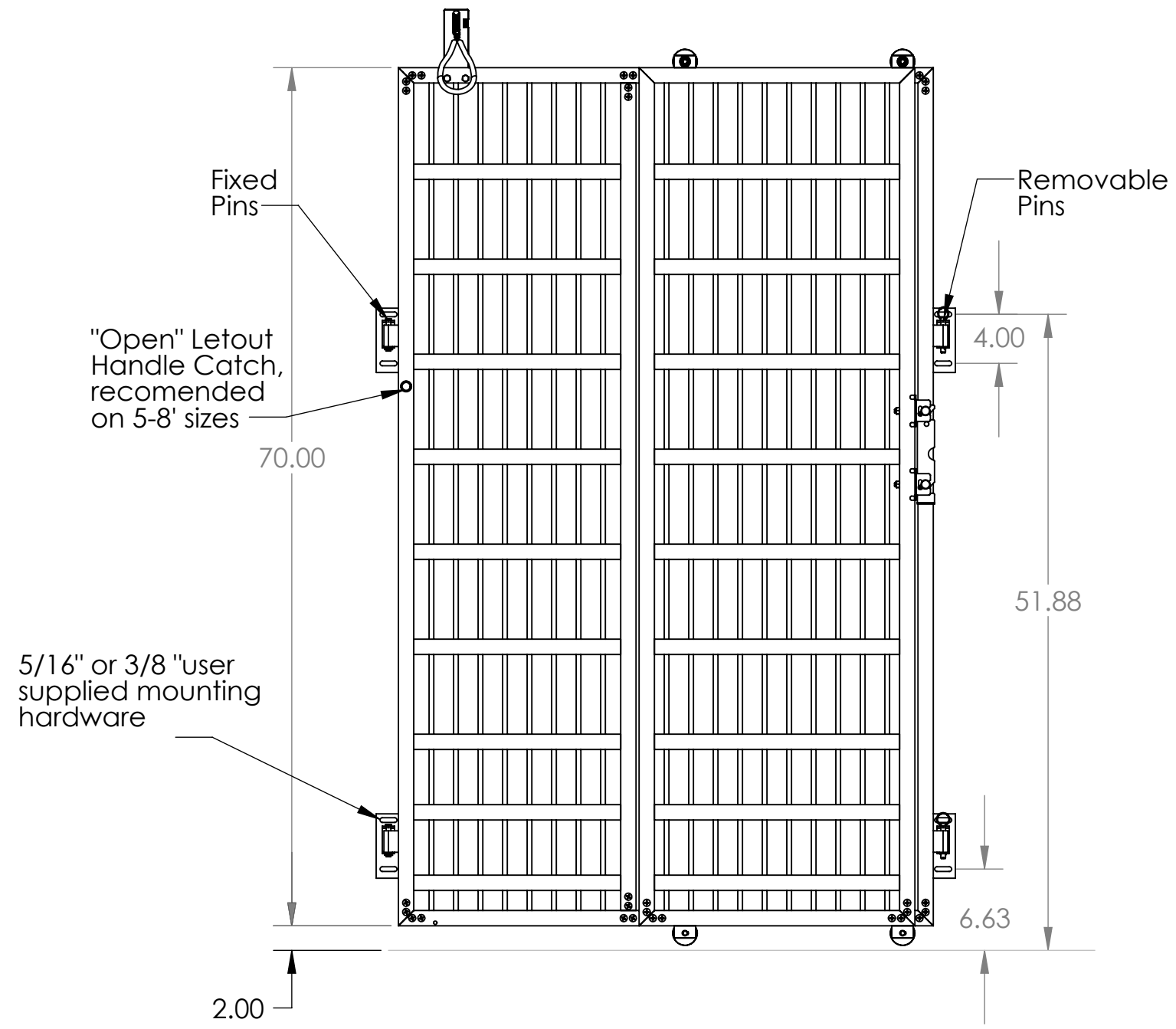
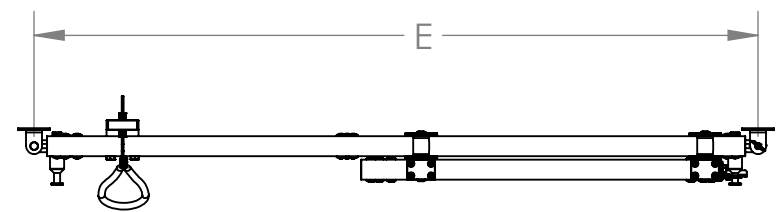
APPROVALS	DATE
DRAWN DAL	04/14/2011
APP.	
APP.	

Sliding Kennel Gate with hinged attachment

B	DWG. NO. 025-0000-0758-XXA	REV:
SCALE: NONE		SHEET 2 OF 4

Part #	Width (ft)	"E" (in)
-00	4	45.25
-01	5	57.25
-02	6	69.25
-03	7	81.25
-04	8	93.25

REV	DATE	DESCRIPTION	DRW	APP



		LARSON SYSTEMS INC. 10073 Baltimore St. NE PH. 763-780-2131 Mpls., MN 55449 FAX. 763-780-2182	
DRAWN	DAL	04/14/2011	Sliding Kennel Gate w/ hinged attachment
APP.			REV:
APP.			B DWG. NO. 025-0000-0758-XXA
SCALE: NONE			SHEET 3 OF 4